

Pump Test Bench:





Includes three racine subbases and one sae b and c foot brackets, unit has a 2" suction line and 1 1/2" pressure port.

Electric motor is 10hp, 1185 rpm , 460 volt, Electric motor to pump coupler is magnaloy 400 series with urethane insert

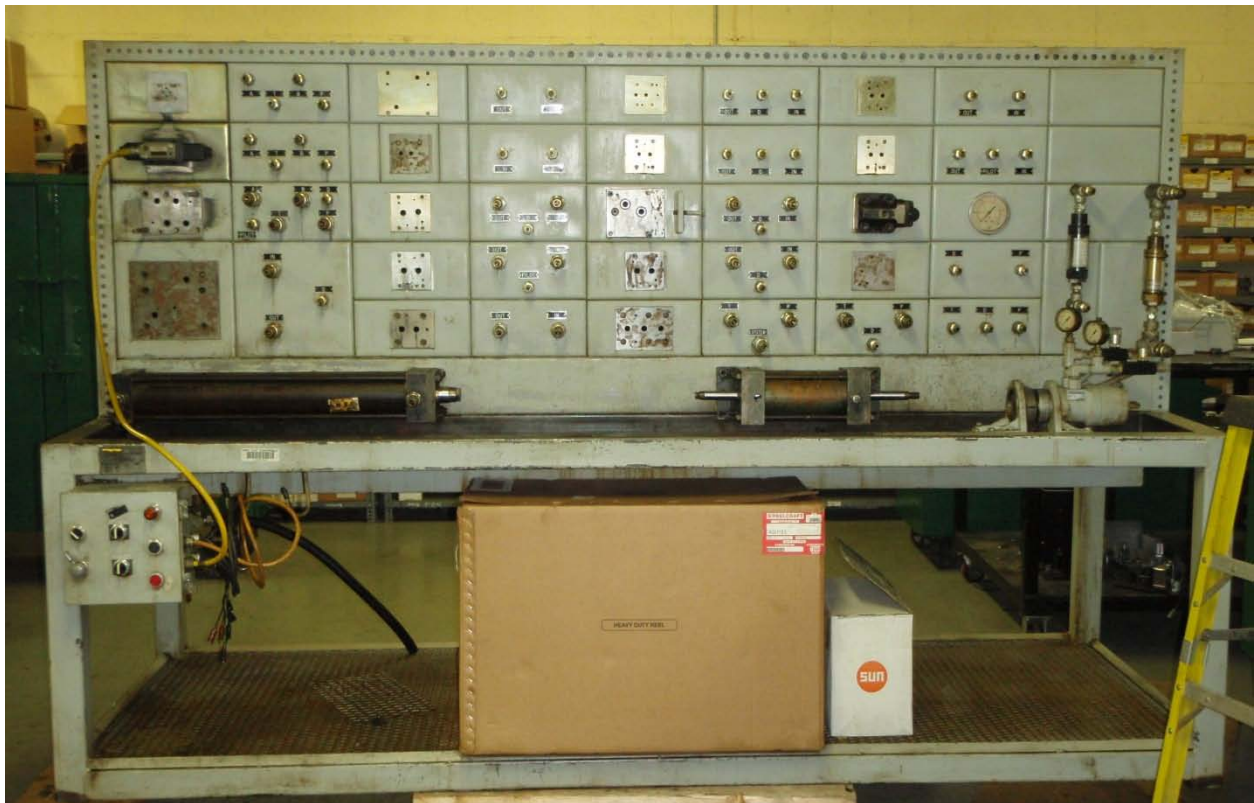
Pressure gauge maximum is 2000 psi

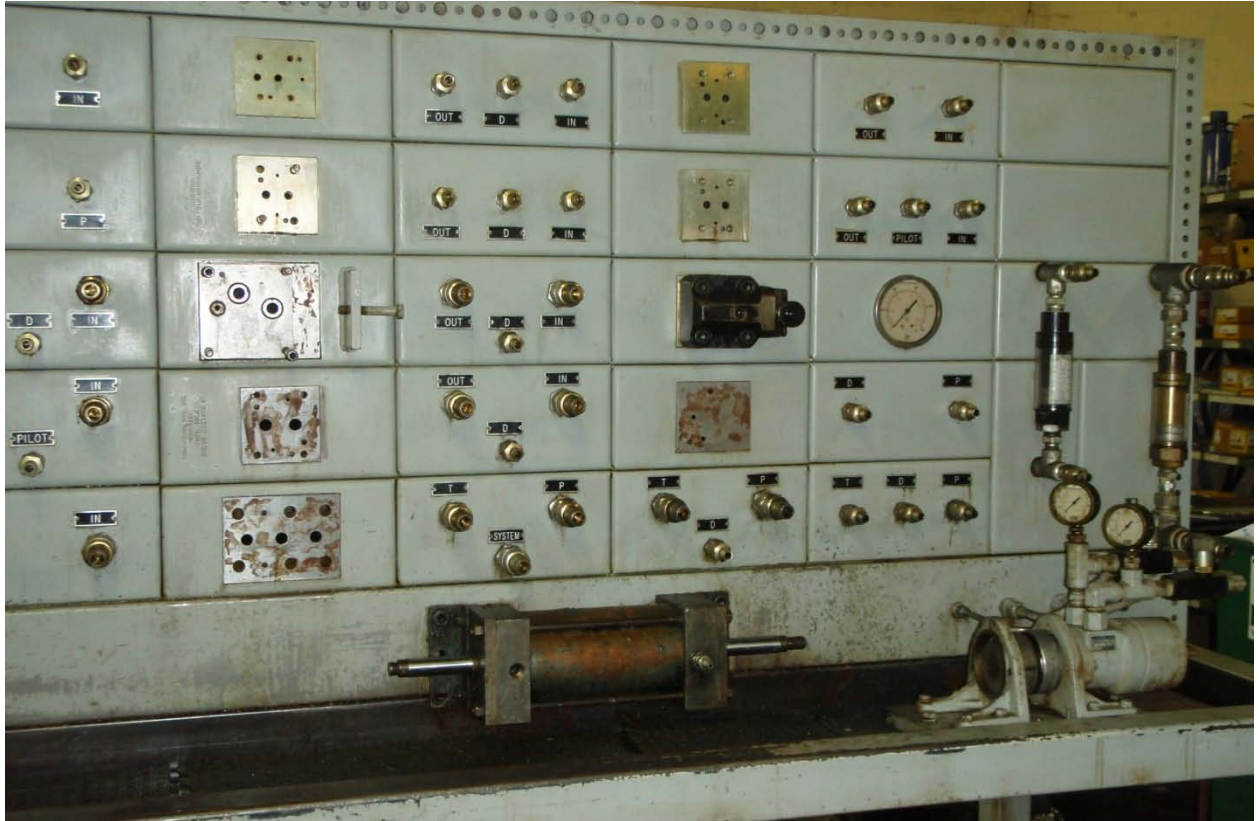
Three flow meters: 0-100 gpm, 0-15 gpm , 0-2 gpm (case drain)

Main flow controls are parker 2" NS2000S – 70 GPM MAXIMUM 0-12 gpm flow meter and 0-25 gpm flow meter plus two loose flow meters 0-30 gpm with flow controls and hose assemblies

DIMENSIONS: 68" TALL X 72" LONG X 60" WIDE

Valve Test Bench:







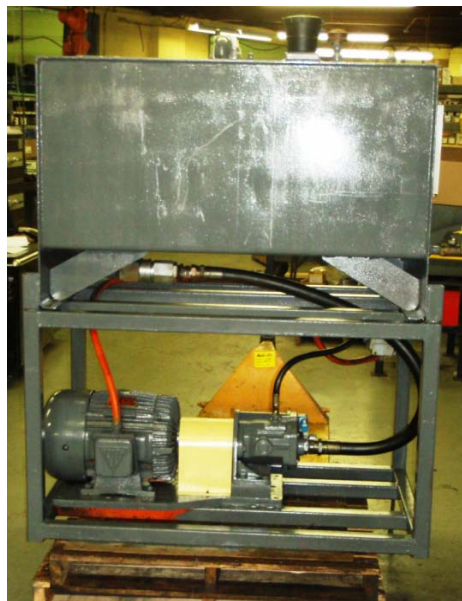
Parker serial # 81192 – 1500 psi

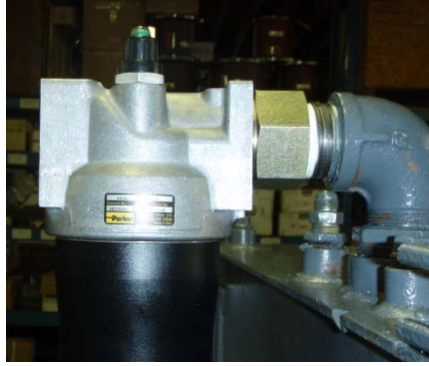
116" wide x 78" tall x 48" deep

120 vac output valve test control box with 3 pin brad Harrison and 5 pin brad Harrison, and flying lead output

Various hose assemblies and fittings

Hydraulic power unit for valve test bench:





Dimension: 55" wide x 70" tall x 39" deep

Electric Motor: 5 hp / 1175 rpm / 254 u / 460v

Pump: Vickers PVB20RSCM11 – 13 GPM AT 1200 RPM thus 700 psi maximum

Parker 40CN2 RETURN FILTER (element Parker HF31H3VQ)

Reservoir: 100 gallon